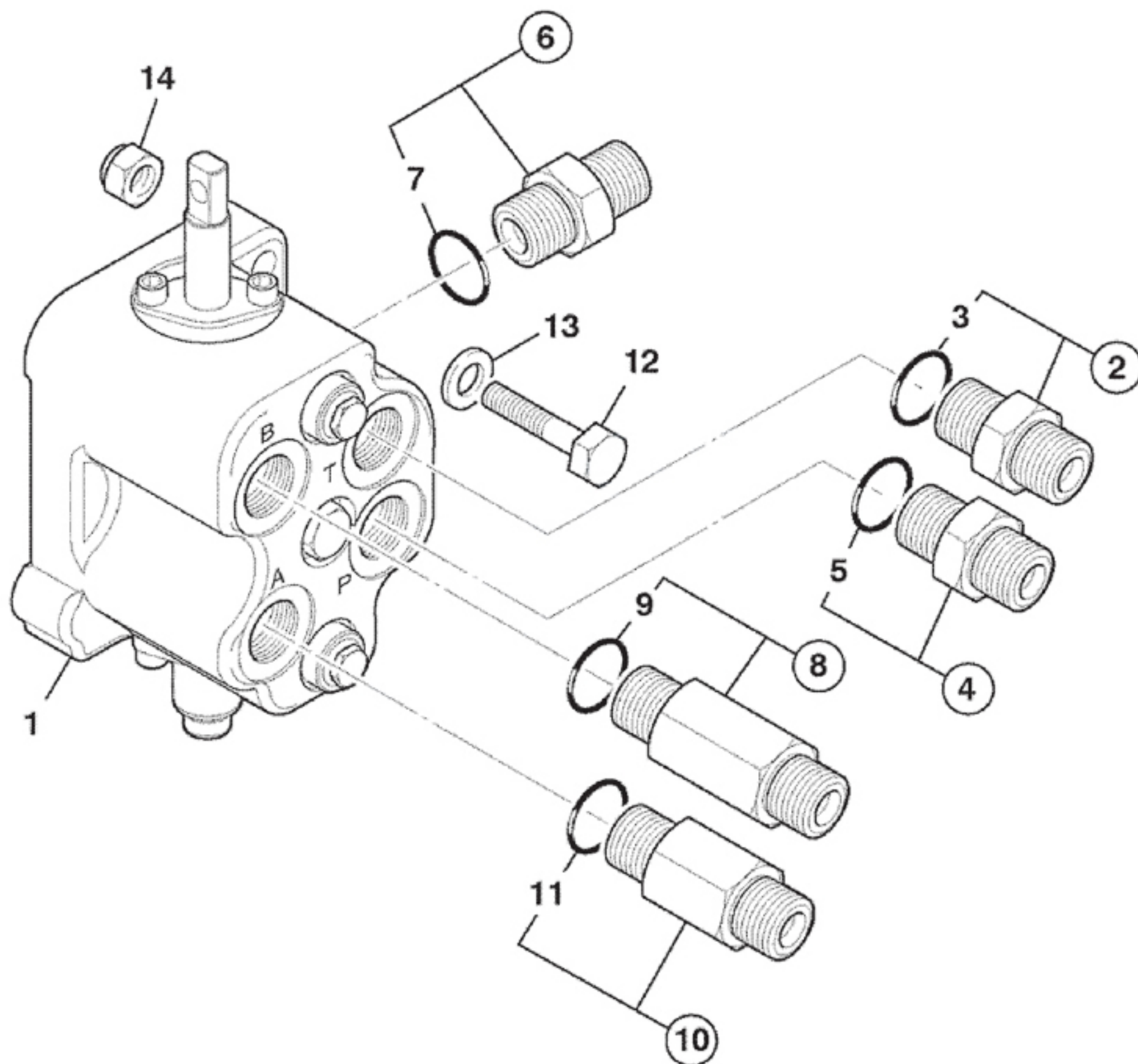




# 9812/0010 E3-3-11 VALVE, AUXILIARY, BACKHOE, GEAR PUMP, AUXILIARY & EXTRADIG DIPPER BREAKER





# 9812/0010 E3-3-11 VALVE, AUXILIARY, BACKHOE, GEAR PUMP, AUXILIARY & EXTRADIG DIPPER BREAKER

Item	Part #	Change No	Description	Usage Code	QTY
1	25/221919		Valve 1 spool,auxiliary black		1
2	1620/2058		Adaptor 3/4BSP x 7/8SAE M/M <i>T port</i>		1
2	816/90650		Adapter extended,70mm lg <i>Breaker, extradig</i>		1
3	:2401/0507		O Ring		1
4	1620/2058		Adaptor 3/4BSP x 7/8SAE M/M <i>P port</i>		1
5	:2401/0507		O Ring		1
6	1620/2056		Adaptor <i>HPCO</i>		1
7	:2401/0507		O Ring		1
8	816/90651		Adapter extended,100mm lg. <i>Top port</i>		1
8	816/90231		Adapter extended M/M 7/8"SAE x 1/2"BSP <i>214e only</i>		1
9	:2401/0507		O Ring		1
10	816/90650		Adapter extended,70mm lg <i>Bottom port</i>		1
10	1620/2055		Adaptor 39.5mm Long. M/M 1/2"BSP x 7/8"SAE <i>bottom port A</i>		1
11	:2401/0507		O Ring		1
12	1315/3412Z		Bolt		2
13	1420/0008Z		Washer Plain		2
14	1370/0303Z		Nut Lock		2