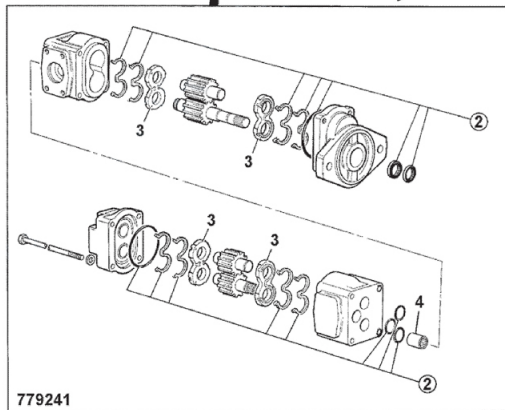
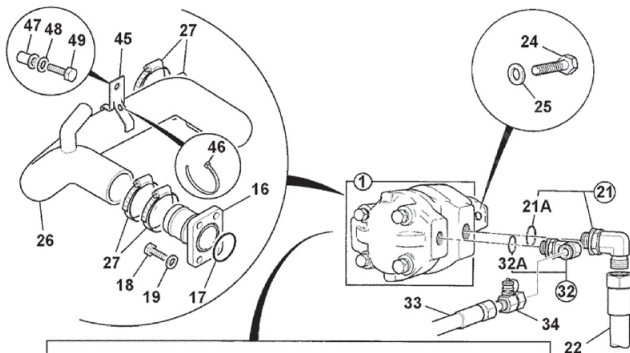




9812/0010 E2-1-4 PUMP 37/33 CCR, MAIN HYDRAULIC,
100 HP BUILDS



779241



9812/0010 E2-1-4 PUMP 37/33 CCR, MAIN HYDRAULIC, 100 HP BUILDS

Item	Part #	Change No	Description	Usage Code	QTY
1	20/925581	Superseded	Pump main hydraulic 37/33 cc/rev		1
1	332/F9031		Pump twin gear 37/33 ccr		1
2	20/950906		Kit-seal main hydraulic pump 4 seal energisers, 4 seal elements, 2 shaft seals, 1 assy sleeve, 5 "O" rings, 1 clipclp <i>Kit-seal pump</i>		1
3	****		None serviced part		1
4	****		None serviced part		1
16	933/20013	Superseded	Adapter suction flange <i>aluminium</i>		1
16	903/20774		Flange Suction port <i>nylon</i>		1
17	2401/0218		O Ring		1
18	1305/1908Z		Bolt		4
19	823/00309		Washer hardened		4
21	.816/90594		Adapter elbow M/M 1-1/16SAEx3/4BSP		1
21A	:2401/0508		O Ring		1
22	629/80043		Hose <i>to loader valve</i>		1
22	629/80251		Hose 3/4BSP 700mm <i>to loader manifold PCS machines only</i>		1
23	2401/0507		O Ring		1
24	1315/0509Z		Screw M12 x 35mm		2
25	1420/0009Z		Washer Plain		2
26	834/10759	<M1335042	Hose suction hydraulic oil <i>powershift transmission (4 speed)</i>		1
26	834/11566	>M1335042	Hose suction, powershift 4 speed		1
26	834/10783	<M1335041	Hose suction 6 speed <i>autoshift transmission (6 speed)</i>		1
26	834/11567	>M1335042	Hose suction, 6 speed		1
27	2201/0013		Clip Jubilee		3
27	332/F6560		Clip worm drive 60 to 80 dia <i>replaces 2201/0013 at tank connection</i>		1
32	816/90476	<M1335126	Adapter elbow 1-1/16SAE x 5/8BSP		1
32	332/C3136	<M1346904	Adapter elbow, with test point 1-1/16SAE x 5/8BSP <i>replaces 816/90476 and 816/90427</i>		1
32	332/D6640	>M1346905	Adapter 1 1/16SAEx3/4BSP with test point		1
32A	:2401/0508		O Ring		1
33	614/24200	<M1346904	Hose 5/8" BSP 640mm long <i>to priority valve</i>		1
33	332/D7856	>M1346905	Hose 3/4BSPx690mm		1
33	614/04700		Hose 5/8 X 485L <i>to priority valve PCS machines only</i>		1
34	816/90427	<M1335126	Adapter test point 5/8 BSP <i>see item 32</i>		1
45	331/61323		Bracket suction hose support <i>items 45 to 49 fitted from Sept 2006</i>		1
46	121/77603		Tie Cable 300mm		1
47	826/01617		Nut rivet M10 open end for 8.5 to 11mm plt		1
48	1420/0008Z		Washer Plain		1
49	1315/3410Z		Bolt M10 x 40		1