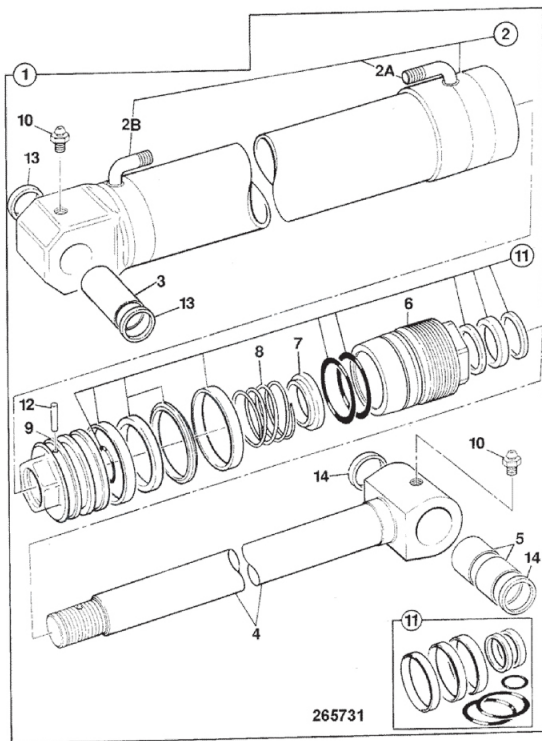




9812/0010 E4-6-1 RAM, DIPPER, 14' STANDARD LIFT,
100MM CYL X 60MM ROD





9812/0010 E4-6-1 RAM, DIPPER, 14' STANDARD LIFT, 100MM CYL X 60MM ROD

Item	Part #	Change No	Description	Usage Code	QTY
1	559/60163	Superseded	Ram dipper 100 X 60 X 1898 OC		1
1	559/60172	Superseded	Ram dipper, 100x60 1898OC 1152.5CC		1
1	559/60230		Ram Dipper, 100x60 1898OC 1152.5CC		1
2	:559/70160	Superseded	Cylinder dipper ram		1
2	:559/70171	Superseded	Cylinder dipper ram		1
2	:559/70229		Cylinder dipper ram		1
2A	****		None serviced part		1
2B	****		None serviced part		1
3	:809/00179		Bearing 60x70x90L		1
4	:590/40583		Rod piston		1
5	:809/00127		Bearing liner 50mm pivot bore		2
6	:594/14025		Kit - end cap assembly service		1
7	:559/00105		Restrictor		1
8	:559/00104		Spring		1
9	:595/10057		Head piston		1
10	:1450/0001		Nipple Grease, Straight 1/8 BSP		2
11	:991/00145		Kit-seal ram assembly <i>For component parts see fram E4-13-18</i>		1
12	:826/01179		Dowel		1
13	:813/00427		Seal grease		2
14	:813/00426		Seal 60X50X5		2